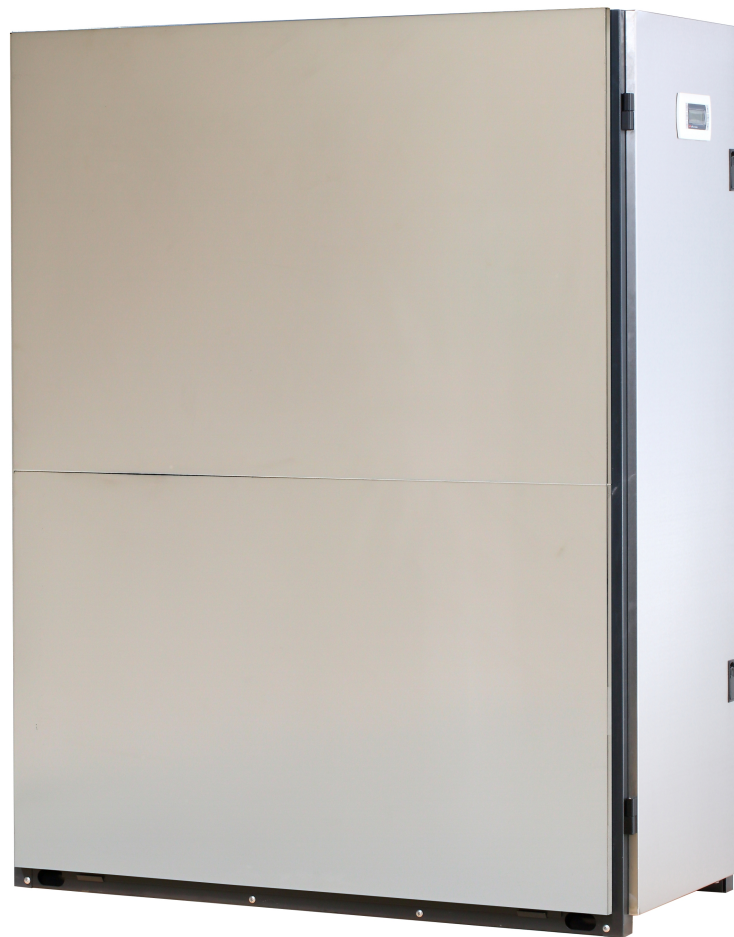


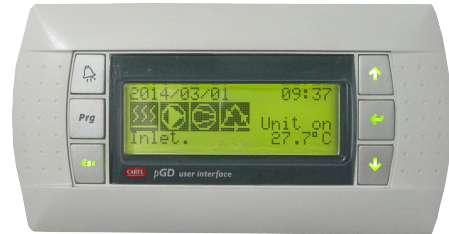
GEO THERMAL

HEAT PUMP GS60



Main Components:

- Carel controller CPPB006DS0:
stable performance
user friendly interface



- Compressor :

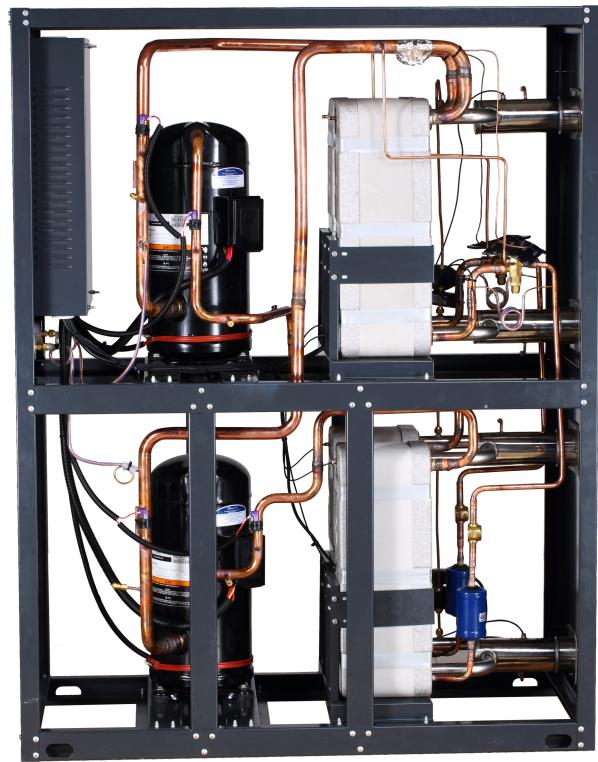


- High efficiency heat exchanger:



- Differential pressure flow switch:





Performance Data

Heating only model:

Heat pump	Type	GS60	
Dimensions, weights, connection dimensions			
Dimensions	HxWxD	1620x590X1270	
Weight	kg	350	
Refrigerant	Type	R410A	
Pipe connector-Indoor side	Inch	G2 ¹ / ₂ "	
Pipe connector-Outdoor side	Inch	G2 ¹ / ₂ "	
Evaporator	Type	Brazed plate heat exchanger	
Condenser	Type	Brazed plate heat exchanger	
Compressor		2 x Copeland Scroll	
Performance Heat pump			
Heat output	at B0/W35 ⁽¹⁾	kW	62.6
Power consumption		kW	16.2
Performance factor			3.86
Indoor side volume flow ⁽³⁾		m ³ /h	10.8
Outdoor side volume flow ⁽⁴⁾		m ³ /h	14.7
Heat output		at W10/W35 ⁽²⁾	kW
Power consumption	kW		15.88
Performance factor			5.68
Indoor side volume flow	m ³ /h		15.5
Outdoor side volume flow	m ³ /h		21.3
Power	Type		Triple phase
Sound power level	dB(A)	62	

(1) B0/W35=Brine water inlet temperature 0°C, heating flow 35°C

(2) W10/W35=Well water inlet temperature 10°C, heating flow 35°C

(3) Test data above is according to EN14511

Performance Data

Heating and Cooling models:

Heat pump	Type	GS60/B	
Dimensions,weights,connection dimensions			
Dimensions	HxWxD	1620x590X1270	
Weight	kg	356	
Refrigerant	Type	R410A	
Pipe connector-Indoor side	Inch	G2 ¹ / ₂ "	
Pipe connector-Outdoor side	Inch	G2 ¹ / ₂ "	
Evaporator	Type	Braze plate heat exchanger	
Condenser	Type	Braze plate heat exchanger	
Compressor		2 x Copeland Scroll	
Performance Heat pump			
Heat output	at B0/W35 ⁽¹⁾	kW	61.5
Power consumption		kW	16.2
Performance factor			3.8
Indoor side volume flow ⁽³⁾		m ³ /h	10.8
Outdoor side volume flow ⁽⁴⁾		m ³ /h	14.7
Heat output		at W10/W35 ⁽²⁾	kW
Power consumption	kW		16
Performance factor			5.63
Indoor side volume flow	m ³ /h		15.5
Outdoor side volume flow	m ³ /h		21.3
Cool output	at W30/W7 ⁽³⁾		kW
Power consumption		kW	16.2
Performance factor			4.07
Indoor side volume flow		m ³ /h	11.35
Outdoor side volume flow		m ³ /h	14.14
Power		Type	Triple phase
Sound power level	dB(A)	62	

(1)B0/W35=Brine water inlet temperature 0°C,heating flow 35°C

(2)W10/W35=Well water inlet temperature 10°C,heating flow 35°C

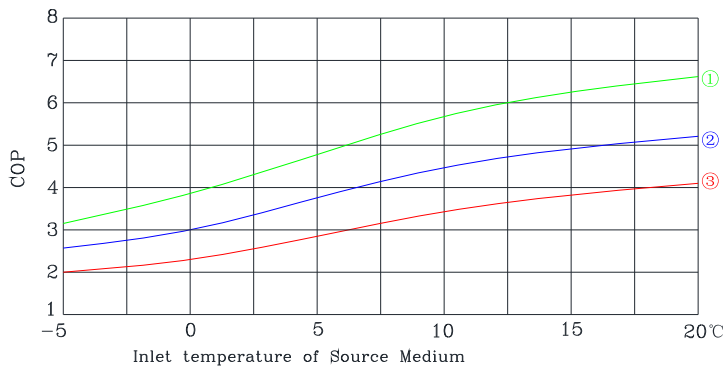
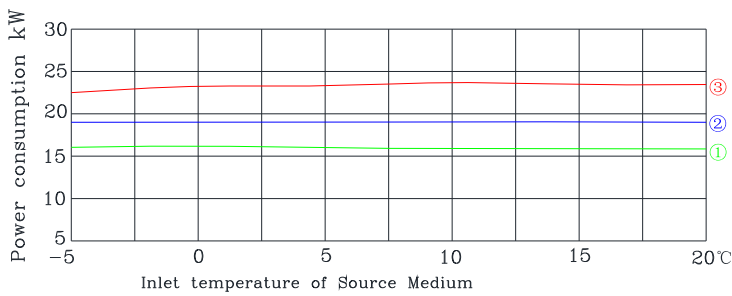
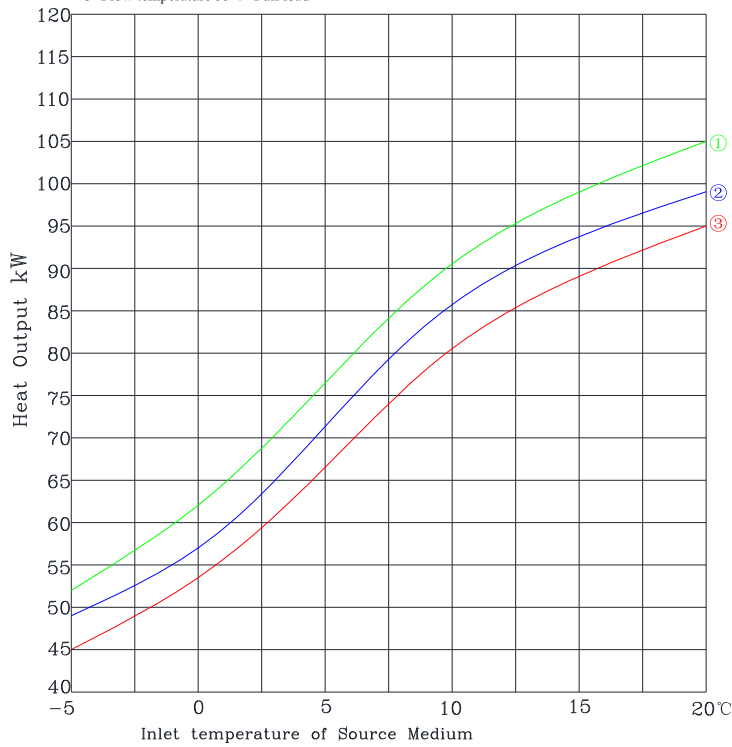
(3)W30/W7=Cooling source water inlet temperature 30°C,Cooling medium flow 7°C

(4) Test data is according to EN14511

Performance Curve

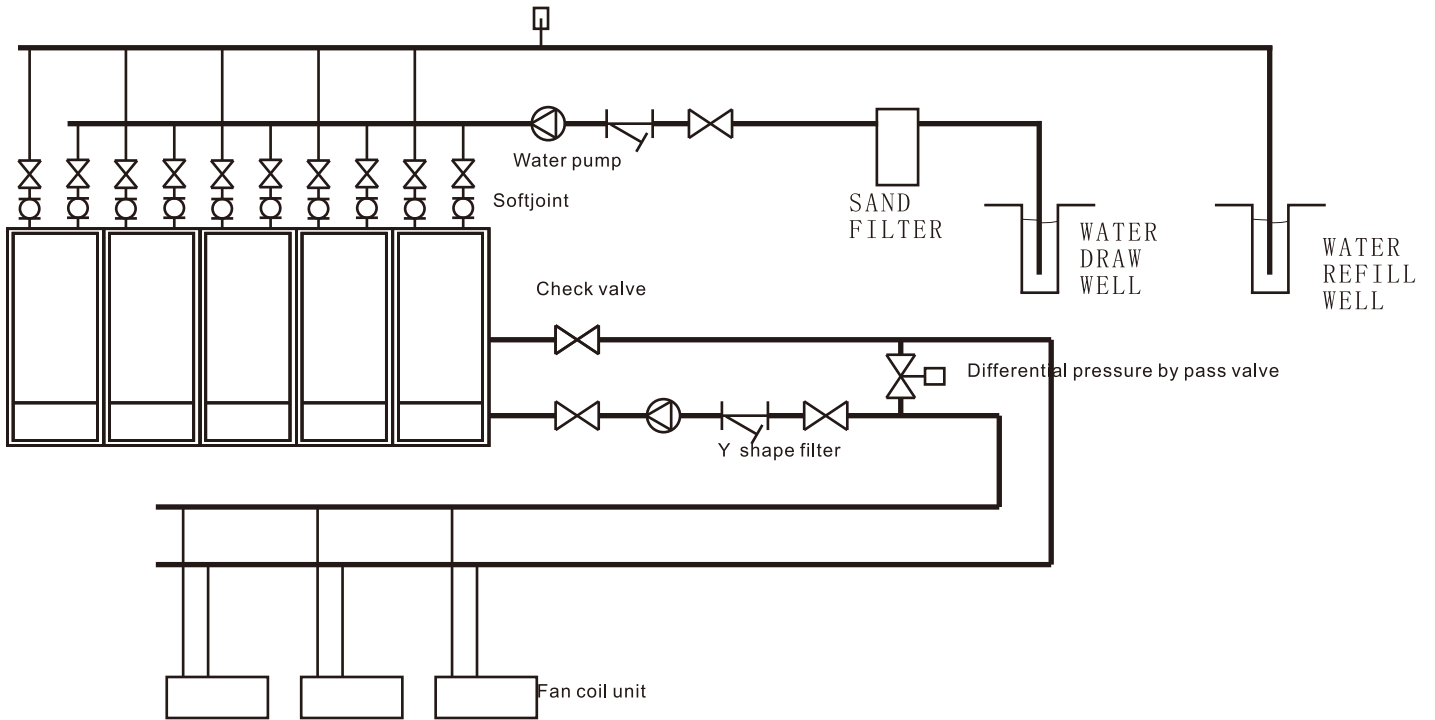
Model:GS60

Heating performance curve
1=Flow temperature 35°C Full load
2=Flow temperature 45°C Full load
3=Flow temperature 55°C Full load

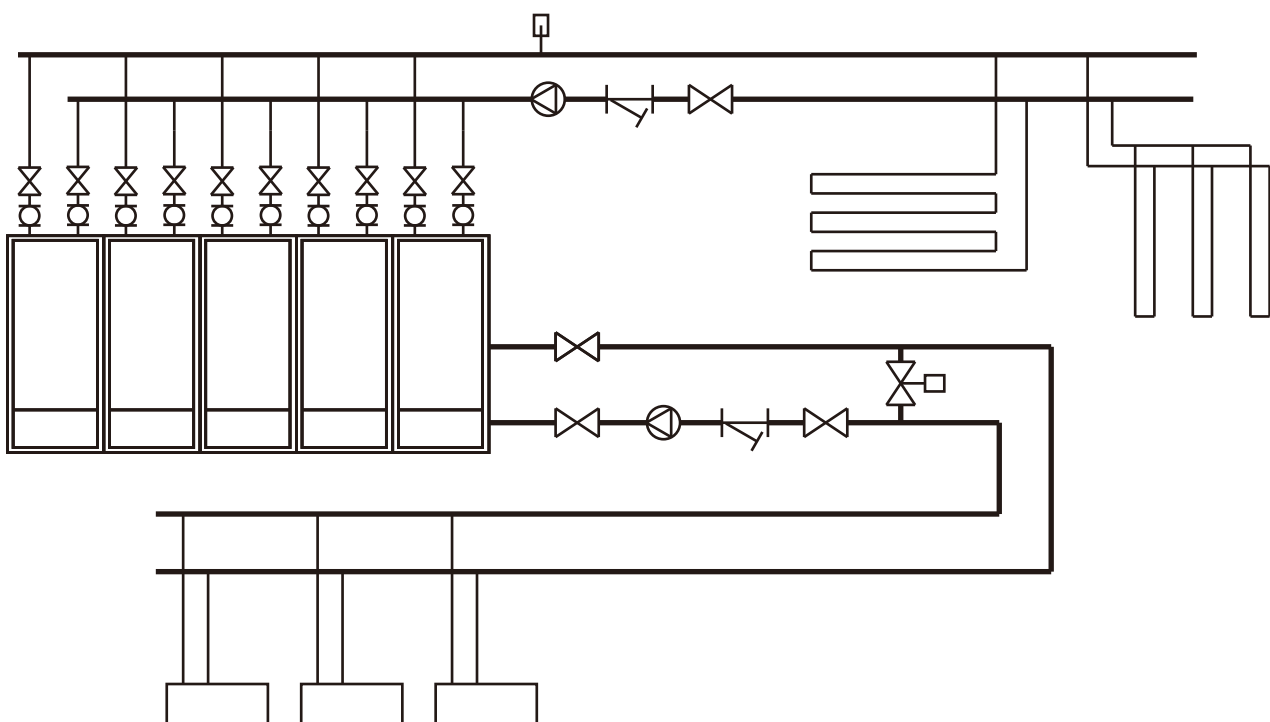


Application:

GROUND WATER SYSTEM

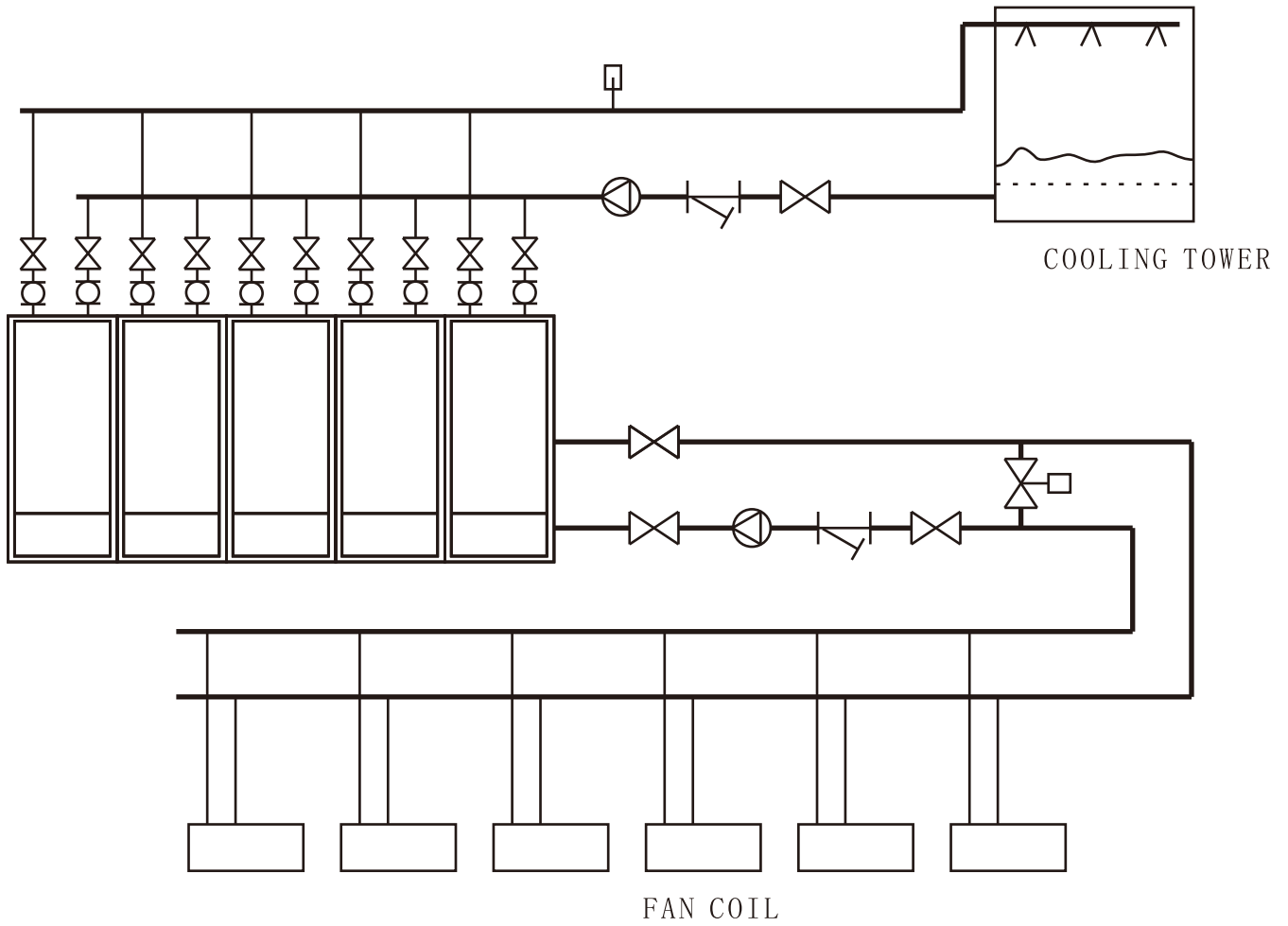


GROUND LOOP SYSTEM



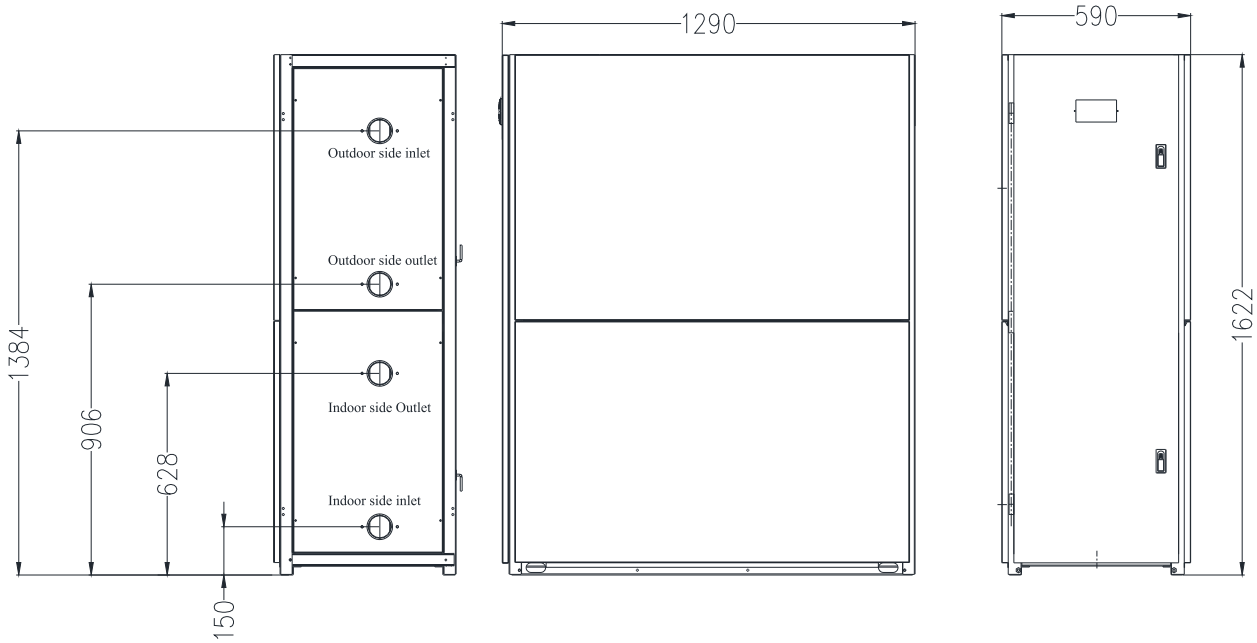
Application:

COOLING TOWER SYSTEM



Dimension

Unit:mm



Pressure drop

